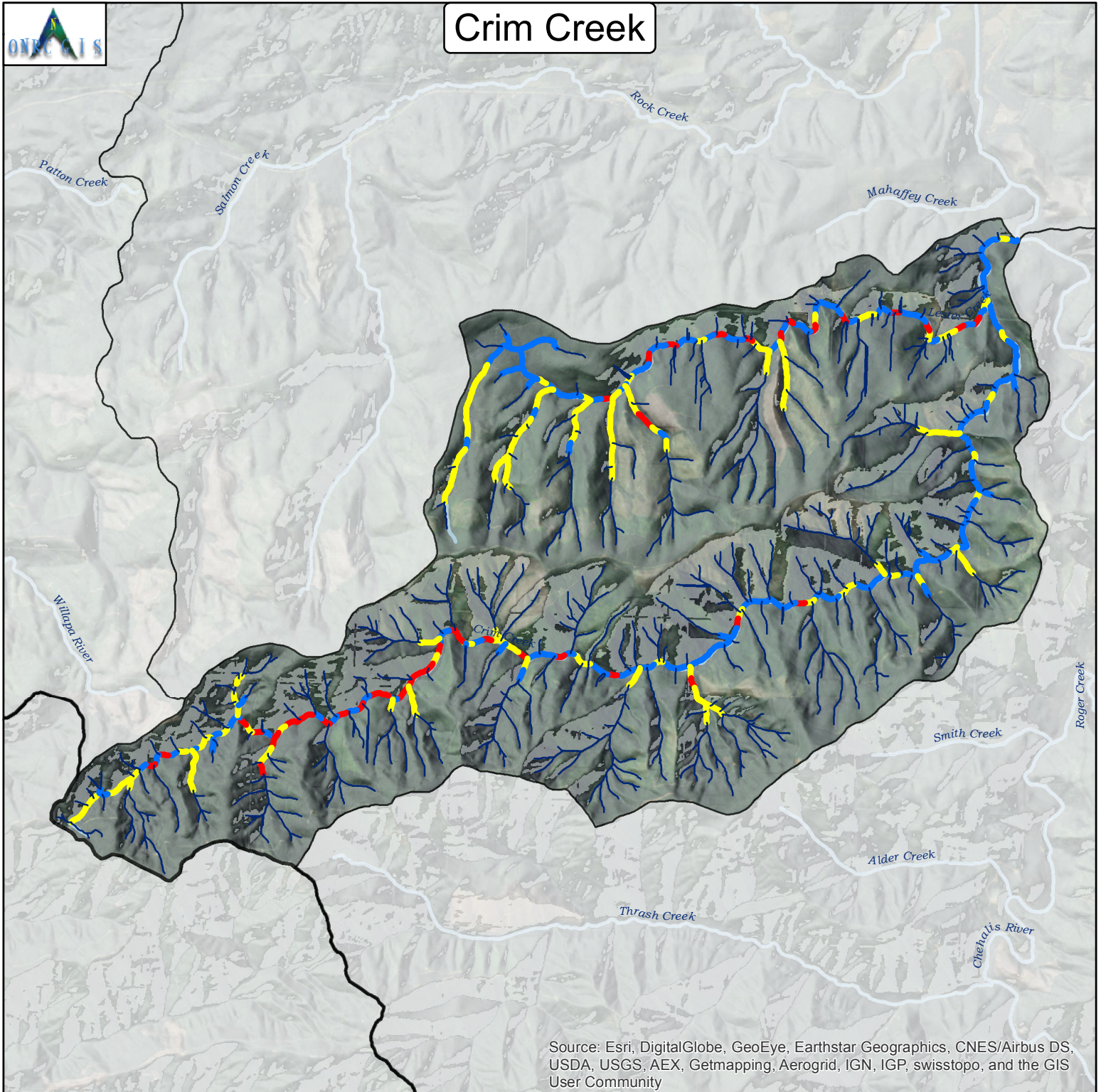




Crim Creek



Source: Esri, DigitalGlobe, GeoEye, Earthstar Geographics, CNES/Airbus DS, USDA, USGS, AEX, Getmapping, Aerogrid, IGN, IGP, swisstopo, and the GIS User Community

Maps By Keven Bennett
UW | ONRC GIS
11/18/2015

0 0.45 0.9 1.8 Miles

0 0.5 1 2 Kilometers
Map Scale 1:52,800

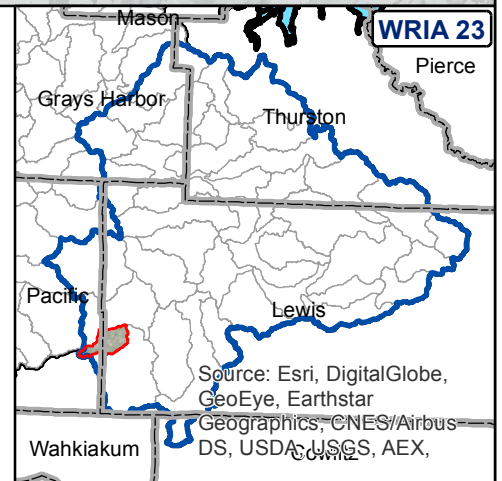
Intrinsic Potential Scoring for Coho Summer Rearing Habitat

- 0
- > 0 to 0.35 Low
- > 0.35 to 0.75 Medium
- > 0.75 to 1.00 High

WSC | ONRC 2012



Projection: UTM NAD83 10N Meters
For Detailed Documentation Go To:
http://www.onrc.washington.edu/MarinePrograms/IPOuterCoast/PostPhaseII_MapPortal.html



Source: Esri, DigitalGlobe, GeoEye, Earthstar Geographics, CNES/Airbus DS, USDA, USGS, AEX,